

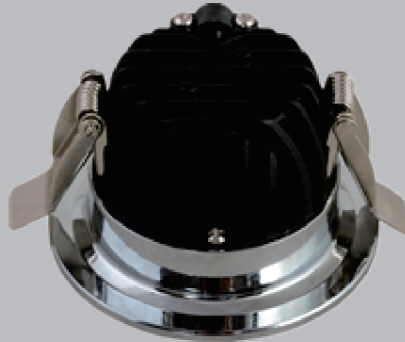
BDS[®]
BERDIS
LIGHTING



Technical Application Guide for Berdis Lighting LED Spotlight

B0107-04/2.5F

Introduction



B0704 model is deeply anti-glare spotlight with curved surface design. Small beam angle covers small area featuring partial illuminations.

Features

1. Small specific lighting area with Reflector/lens.
2. Easy installation design of external driver and junction box.
3. Long lifespan for good heat dissipating.
4. Triac / DALI / 0-10V Dimmable version options.
5. Fitting Color: white sandblasted, black sandblasted, nickel brushed.
6. Color Temperature Options:
2700K; Dim to warm; 3000K; 4000K; 6000K;
RGBW APP Smart control with TUYA; 3000-6000K APP Smart control with TUYA



Application notes

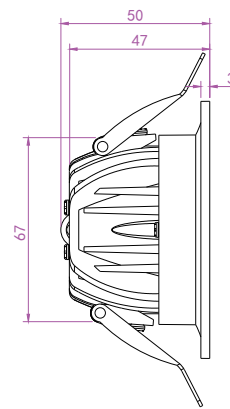
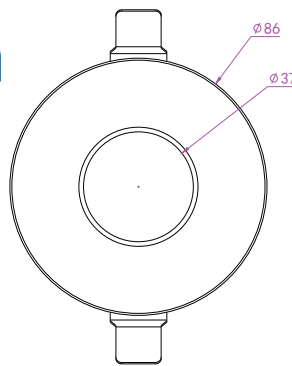
- The lamp must be installed by professional electrician.
- Ensure the power supply is switched off before fitting this product
- Keep away from corrosive gas

It is designed for general lighting applications in home, office, gallery, shop, school, hotel, etc. It is also widely used for public areas, such as stairway, lobby, reception, corridor etc.

Certificates



Product Information



Technical Specifications

Model	Voltage	Power	Power Factor	Beam angle	Dimmable	Lumen (±5%)	CCT	Lifespan	CRI	Dimension
B0107-04	AC100-277V	5W	≥0.5	24° 38°	No	465	2700K	50,000h	≥90	Ø85*50mm cutout 75mm
						475	3000K			
						480	4000K			
						485	6000K			
B0107-04	AC200-240V	5W	≥0.9	24° 38°	Yes	460	2700K	50,000h	≥90	Ø85*50mm cutout 75mm
						470	3000K			
						475	4000K			
						480	6000K			
B0107-04	AC100-277V	7W	≥0.5	24° 38°	No	675	2700K	50,000h	≥90	Ø85*50mm cutout 75mm
						685	3000K			
						690	4000K			
						695	6000K			
B0107-04	AC200-240V	7W	≥0.9	24° 38°	Yes	670	2700K	50,000h	≥90	Ø85*50mm cutout 75mm
						680	3000K			
						685	4000K			
						690	6000K			

Driver data Sheet(Flicker-free Driver)

Driver Type	Reverse-phase Dimming		Dim to Warm	3 Steps Current		Non dim	
Input rated Voltage	AC230V					AC100-277V	AC100-277V
Frequency	50Hz					50/60Hz	50/60Hz
Input Voltage	AC200-240V					AC90-305V	AC90-305V
Efficiency	≥90%					≥92%	≥92%
Wattage	5W	7W	5W/ 7W	5W	7W	5W	7W
Power Factor	≥0.9					≥0.5	≥0.5
Rated input current	≤0.1A	≤0.1A	≤0.1A	≤0.1A	≤0.1A	≤0.1A	≤0.1A
Full load output Voltage	DC14-25V	DC14-25V	DC14-25V	DC14-25V	DC14-25V	DC25-42V	DC25-42V
Rated output current	260mA	260mA	260mA	260mA	260mA	135mA	135mA
Output current range	260mA±5%	260mA±5%	260mA±5%	260mA±5%	260mA±5%	135mA±5%	135mA±5%
Power tolerance	±5%						
Current output tolerance	±5%						
Dimming range	10%-100%					—	—
Dimmer	RPC					—	—
Short circuit protection	PASS						
Over voltage protection	PASS						
Over temperature protection	PASS						

Fixture Compatibility

Rated Wattage	Electrical Classification	Ingress Protection	Operating Temp	Operating Humidity	Storage Temp
5/7W	II	IP21/54/65	-20°C~45°C	0~90%	-20°C~65°C

Deeply Anti-glare Lightness

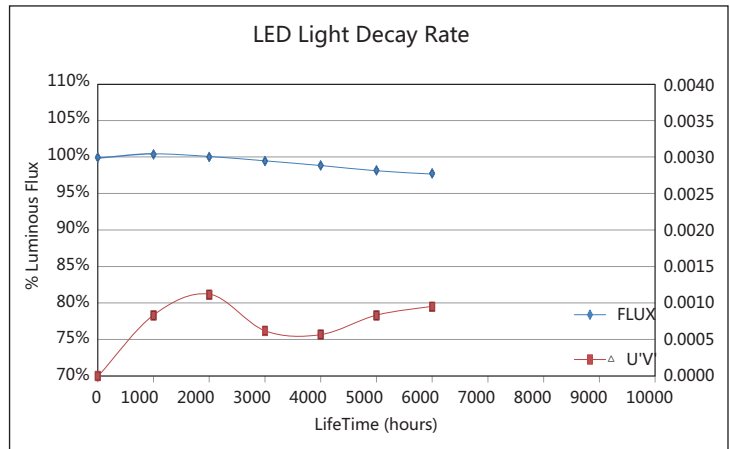
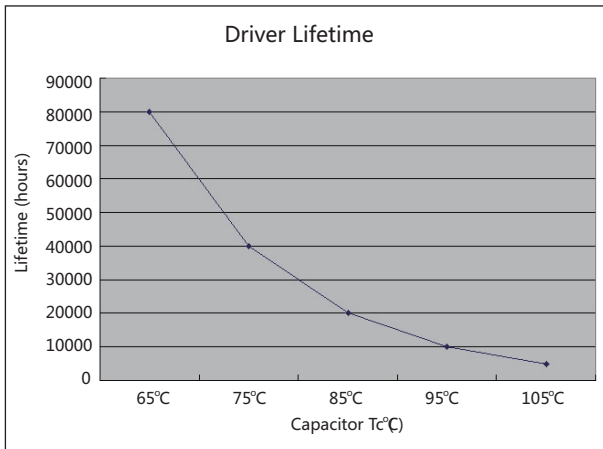
The best distance from chip to glass,
perfect optical angle of reflector,
with second reflection of surface ring,

applying to double anti-glare,
feels light softer, uniform light source,
reduces light pollution, and flicker free.



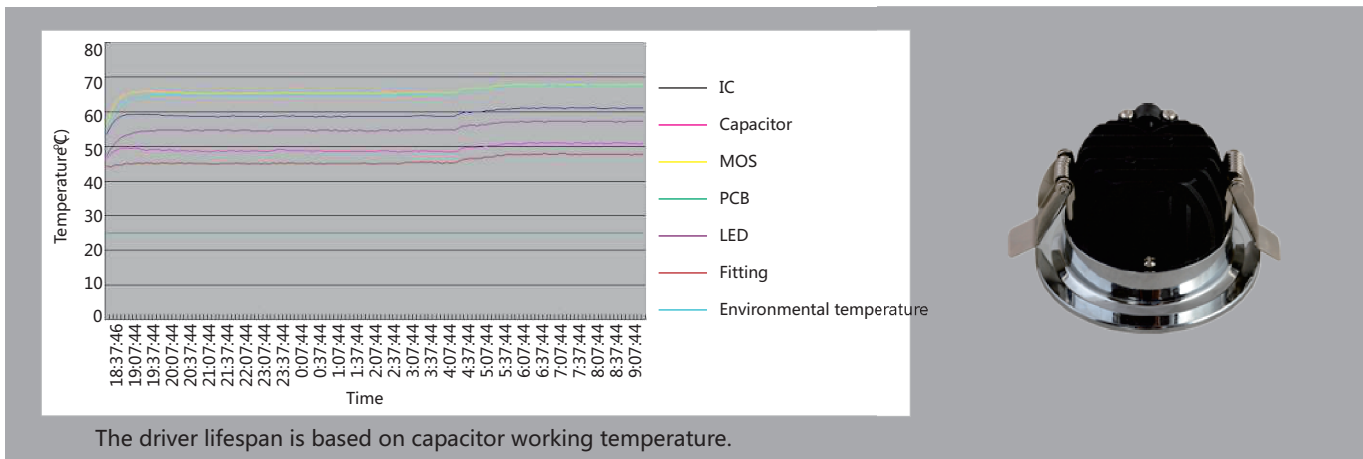
Easy control with smart APP and you just need to click on your phone. This can be adjusted under the Tuya system which can connect the whole house intelligence.

Driver lifetime & LED light decay rate

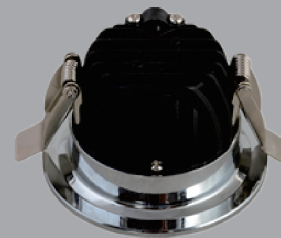


Temperature

- The testing is operated at 25°C
- The lifetime of capacitor, minimum of 5,000 hours if operated at 105°C, will be doubled whenever the temperature drops 10°C
- The highest withstand temperature of IC, MOS could be 120°C
- The highest withstand temperature of LED junction temperature is 150°C

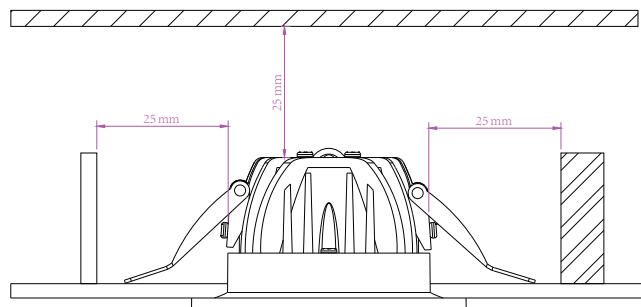


The driver lifespan is based on capacitor working temperature.



Installation

Install requirements	
A-gap above the fitting	25mm
B-gap to the building material	25mm
C-gap to the thermal insulation	25mm



<p>1. Open a hole according to the cutout size of led downlight.</p>	<p>2. Open the junction box cover, see Figure 1. (Model dependent):</p>
<p>3. Put the main AC wire through line pressing clip, feed the L.N to the fast connection terminal block respectively then compress the line pressing clip.</p>	<p>4. Close the junction box cover tightly, then put junction box and driver into the hole.</p>
<p>5. Hold back spring clips then push downlight into the hole.</p>	<p>6. Make sure the downlight fixed tightly in ceiling, turn on the power.</p>

Packaging Information

	SIZE(CM)	N.W/pc (KGS)	G.W.(KGS)	Q'TY(PCS)
Carton	60.5*24.6*45.5	0.45	13	50

	CTNS	Q'TY(PCS)	VOLUME(CBM)
20" standard container	593	29635	28
40" standard container	1186	52969	56

